

Darvell

Residence



Peace of mind.

Our Story

White Eagle Development is an Egyptian-Emirati real estate company established in 2014 in Abu Dhabi, UAE. With a proven legacy in real estate and the medical sectors, the company owns over 16 medical centers and 16 pharmacies across the UAE.

Our vision is to bring UAE expertise to Egypt's booming real estate market. By applying innovative concepts and modern designs, we aim to achieve unparalleled success and exceed our achievements in the UAE.

At the heart of our philosophy lies a commitment to delivering exceptional real estate experiences. From planning to execution, we ensure every project meets our clients' expectations, delivering value beyond the sale.



Meet the board

Since our establishment in 2014 in Abu Dhabi, UAE, White Eagle Development has been driven by a bold vision: to transfer our extensive expertise and proven success in the UAE to Egypt's promising real estate market.

Guided by our core values of Professionalism, Credibility, Creativity, and Commitment, we strive to create exceptional projects that reflect our dedication to quality, innovation, and customer satisfaction.

At White Eagle Development, our mission goes beyond building properties—we aim to craft communities and lasting relationships with our customers. Every project we deliver is meticulously planned and executed to offer integrated housing solutions that meet diverse customer needs while maintaining the highest standards of quality and modernity.

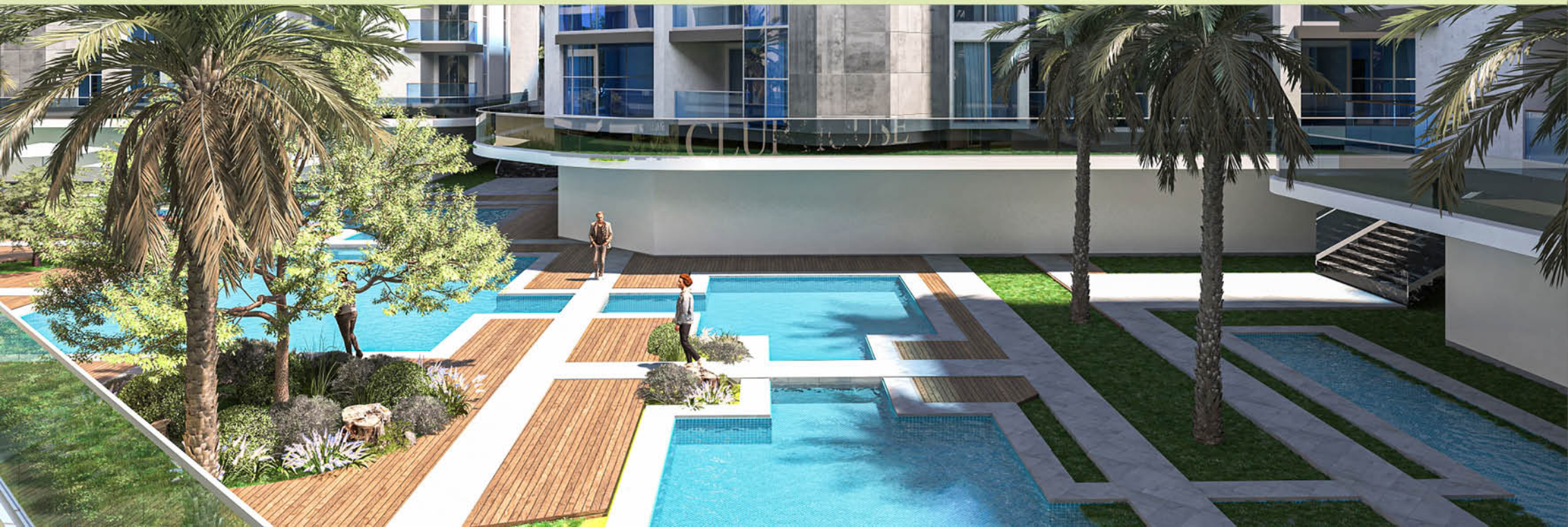
As an Egyptian-Emirati company, we are proud to bring a legacy of excellence from the UAE to Egypt. By blending our experience in real estate with a commitment to innovation, we seek to redefine comfort and prosperity through projects that add real value to our customers' lives. Together, we are building not just homes, but futures.

Dr. Ahmed Gebilji-Chairman

WHITE EAGLE
DEVELOPMENT

Vision

To lead the real estate industry by offering sustainable, innovative developments with exceptional designs that stand the test of time and enhance communities.





Mission

To blend form and function perfectly, delivering high-quality real estate projects that meet all client needs, challenge conventional ideas, and create lasting value for our customers.

Welcome home

We are proud to announce **Darvell Residence**, our third milestone project in West Cairo. This comes after the remarkable success of Eagle Tower and Darvell Business Complex in the New Administrative Capital—two projects that set new benchmarks for quality, design, and customer trust. With **Darvell Residence**, we continue our legacy of delivering outstanding real estate experiences, redefining comfort and luxury in one of Egypt's most sought-after locations.





2023
New Capital



2023
New Capital



2025
West Cairo



2025
North Coast





Darvell

Residence

{/D.a.r.v.e.l.l/}

noun

It is of French origin, and the meaning of Darvell is «town of eagles».

Darvell Residence symbolizes strength, elegance, and elevation—just like the eagle, a symbol of greatness and ambition.

The project embodies this concept by offering a residential community that seamlessly blends modernity, comfort, and security, with designs that exude luxury and an environment that makes you feel like you're soaring above the rest.

Introducing Darvell Residence

Darvell Residence is not just a place to live, it's a place to thrive. With a blend of contemporary design, expansive green spaces, and world-class amenities, Darvell offers a luxurious lifestyle in a serene, secure environment. Your dream home is now a reality.

رأحة البيسان





The Concept

راحة البال

Darvel Residence isn't just a place to live—it's where peace of mind becomes a way of life. Built around the concept of Rahet El Bal, the project seamlessly blends modernity, security, and comfort, ensuring a lifestyle that is as serene as it is vibrant.

With elegant architectural designs surrounded by the tranquility of nature, Darvel Residence offers you the perfect balance between sophistication and harmony. Every corner is thoughtfully crafted to reflect our commitment to creating a community where your comfort and peace are always a priority.




Sphinx
International
Airport

Al Dabaa Corridor

Rod al Farag Corridor

Smart Village

Sheikh Zayed
City

26th of July Corridor

Arkan
Plaza

Mall
of Arabia

New Giza

Juhayna
Square

Grand
Museum

Dream Land

West
Somid

Mall of Egypt

O west

Wadi Degla
Club

El Wahat Rd

Ring Rd

Darvell
Residence

6th of October
City

El Wahat Rd

Msa

Key Landmarks

26th Axis

Carrefour - 2 Minute

Emirates Gas Station - 2 Minute

Nawal el Degewi university (MSA) - 3 Minute

Mall of Egypt - 10 Minute

Mall of Arabia - 15 Minute

Juhayna Square - 15 Minute

Gas stations and other essential services - 2 Minute

The Location

Located in October Gardens, Downtown area, opposite 26th Axis from the Wahat Main Road and Dahshour Link, in front of Carrefour and Emirates Gas Station, near Nawal el Degewi university (MSA), just steps away from Mall of Egypt.

Darvell Residence offers the perfect balance of accessibility and tranquility. With easy access to major roads and close proximity to key locations such as Carrefour, and other essential services, you're always connected to the best of what the city has to offer.

Facilities

Darvell is designed with you in mind, offering the following world-class facilities.

Retail & Commercial Areas

A vibrant shopping area with essential services

Swimming Pools

Relax and unwind in our refreshing pools.

Children's Play Area

Safe, fun, and engaging spaces designed for kids.

Fitness Center & Gym

Modern and fully equipped gym to keep you fit



Jogging Tracks & Green Spaces

Enjoy the great outdoors with ample green spaces and dedicated jogging paths.

24/7 Security

Advanced security systems with gated access and QR-code technology to ensure peace of mind.

Mosque

A dedicated space for your spiritual well-being

Facilities



Club house

A luxurious social hub offering exclusive amenities for relaxation and entertainment.

20% Water features

Adding tranquility and aesthetic appeal to the community.

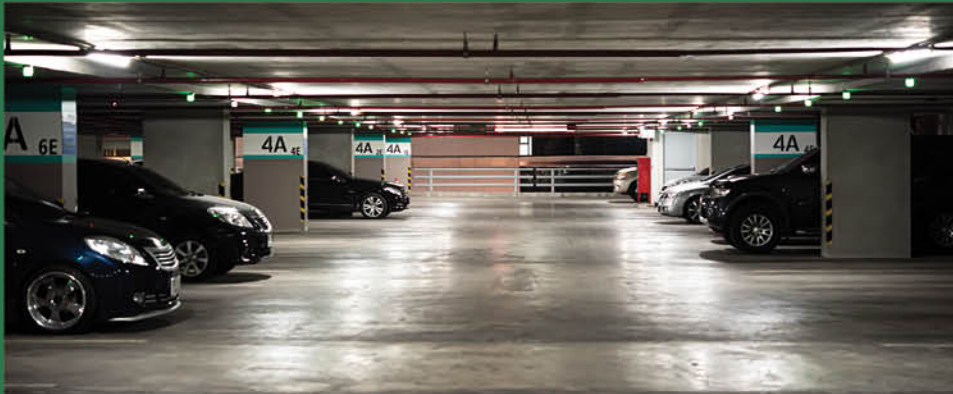
Over 60% Green Spaces

Enjoy lush greenery and a serene environment.



Smart Security System

Entry and exit through smart gates using barcodes for enhanced safety.



Variety of Unit Sizes

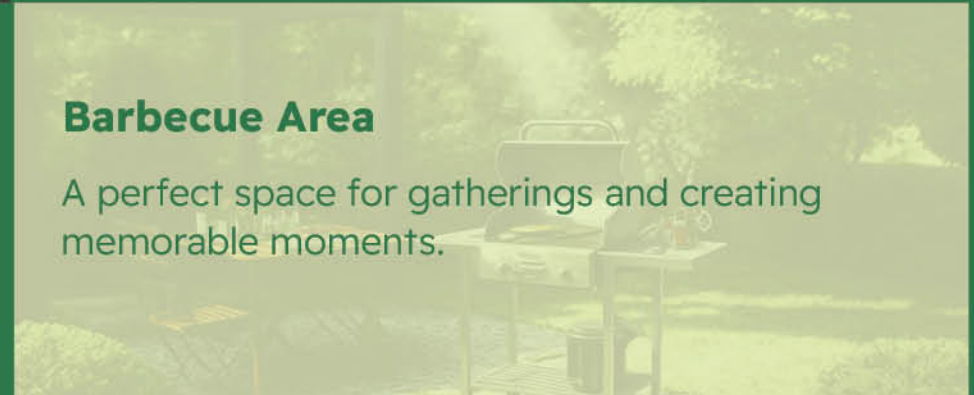
Designed to suit all preferences and needs.

Underground Garage

Covers the entire project area, ensuring a safe and car-free environment for children and adults.

Barbecue Area

A perfect space for gatherings and creating memorable moments.



Facilities



Central Park

A 5,000 sqm green sanctuary offering tranquility and space to relax and unwind.

Child and Visitor Monitoring

Stay in control with advanced surveillance cameras covering children and visitor areas.

Healthcare Services

Comprehensive health facilities to ensure your well-being and peace of mind.



Water Features and Green Views

All units boast breathtaking views of serene water features and lush open greenery.



Children's Area and Nursery

A safe, engaging space for kids, complemented by a fully equipped nursery for care and learning.

Meeting Rooms

Modern, fully equipped spaces designed for your professional gatherings.

Cleaning Services

Professional cleaning teams keep your surroundings spotless and inviting.



Project Highlights

- 16 Residential Buildings offering a range of spacious apartments.
- 10 Feddans of Lush Greenery with tranquil lakes and beautiful landscapes.
- Wide-open spaces designed to provide comfort, freedom, and a seamless living experience.
- Located next to Carrefour and Nawal el Degewi university (MSA), convenient access to essential services.
- Basements and Rooftop Gardens with a swimming pool for additional recreational spaces.
- Sustainable design features ensuring a greener, eco-friendly environment.

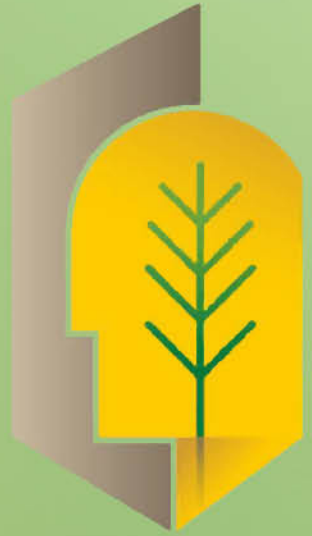




Criteria Design Group

Criteria Design Group - CDG - is a multidisciplinary architecture, interior designing, landscaping and urban planning company. The company was first founded in 2007 under the name ICE - International Consultancy Engineering and then was relaunched in 2013 with its new identity holding a uniquely new concept as reflected in its present name, Criteria Design Group. We mainly operate from Egypt having our head office located in Maadi, Cairo.

CDG Experts have been in the field for more than fifteen years, working in different architectural and design projects to private and governmental entities on various scopes and sizes.



CRITERIA
DESIGN GROUP





COFFE







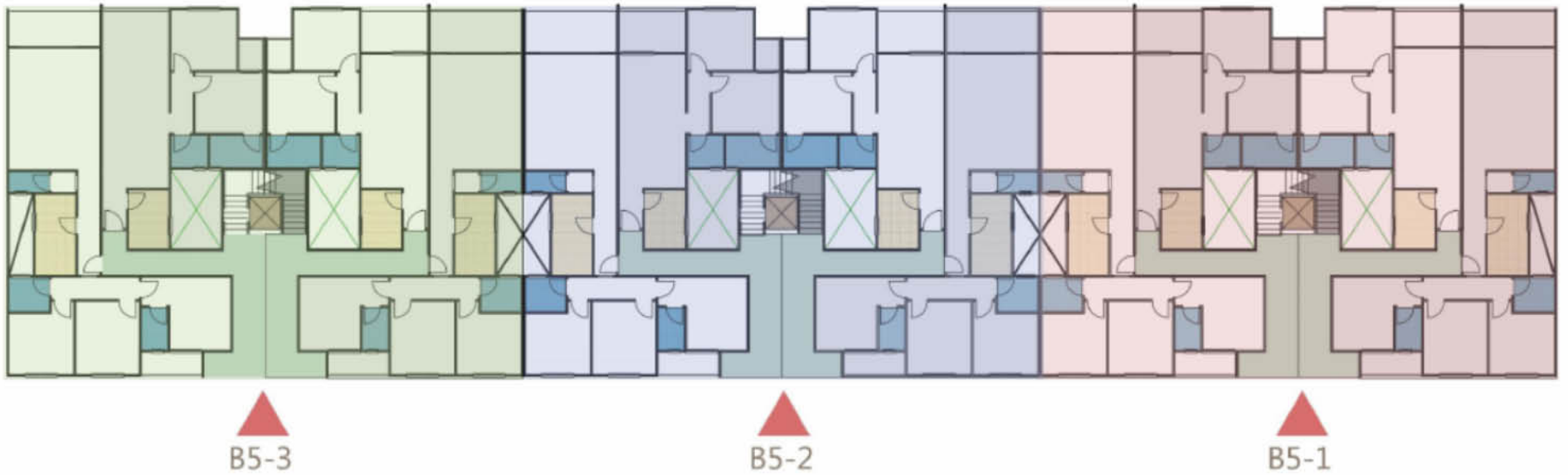






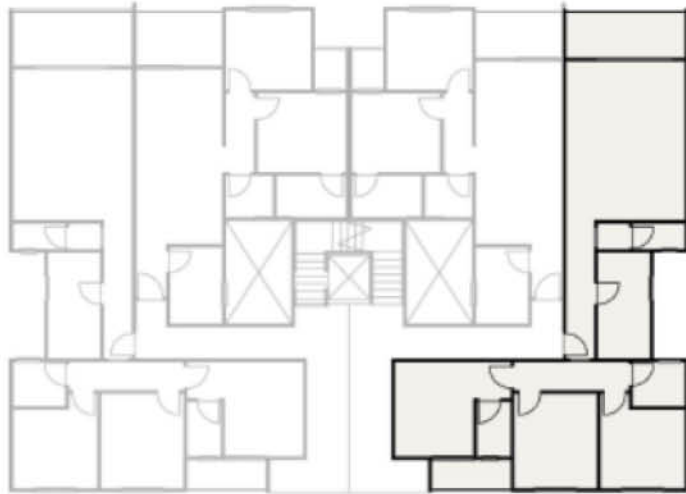
Bulding B5

B5-G



Ground Floor

B5-1-G



Ground Floor

Apartment 1

Code : B5-1-G-1

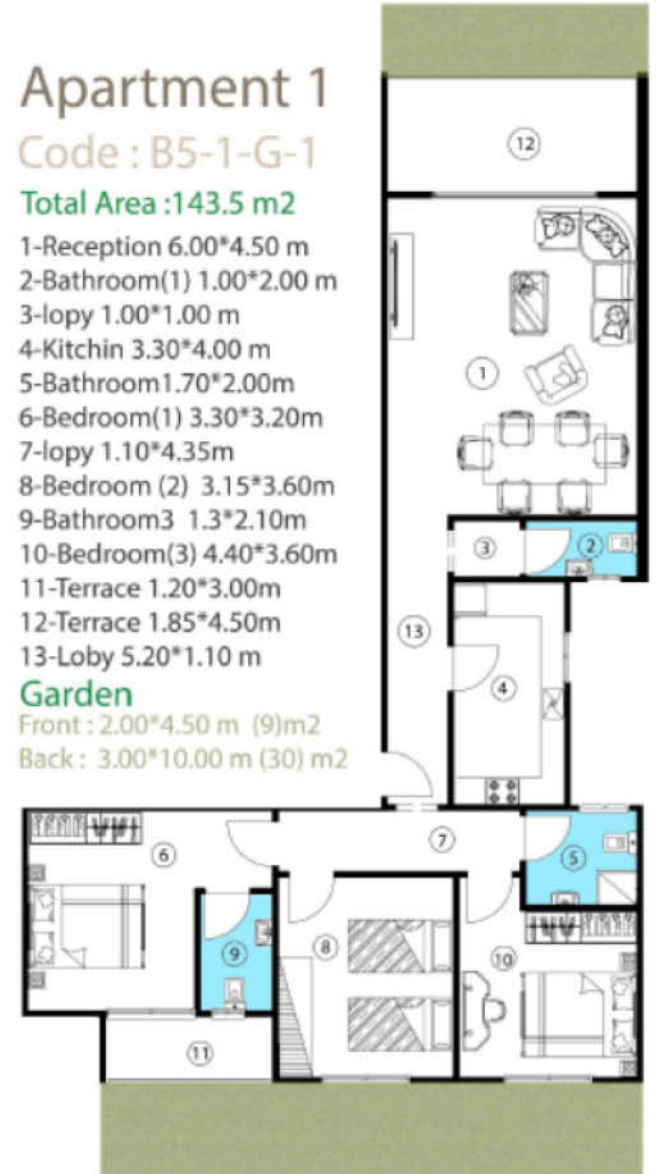
Total Area :143.5 m²

- 1-Reception 6.00*4.50 m
- 2-Bathroom(1) 1.00*2.00 m
- 3-lopy 1.00*1.00 m
- 4-Kitchin 3.30*4.00 m
- 5-Bathroom1.70*2.00m
- 6-Bedroom(1) 3.30*3.20m
- 7-lopy 1.10*4.35m
- 8-Bedroom (2) 3.15*3.60m
- 9-Bathroom3 1.3*2.10m
- 10-Bedroom(3) 4.40*3.60m
- 11-Terrace 1.20*3.00m
- 12-Terrace 1.85*4.50m
- 13-Loby 5.20*1.10 m

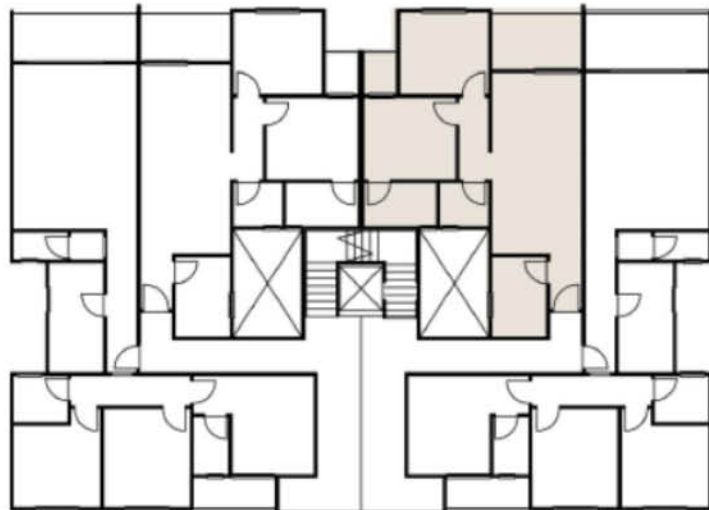
Garden

Front : 2.00*4.50 m (9)m²

Back : 3.00*10.00 m (30) m²



B5-1-G



Ground Floor

Apartment 2

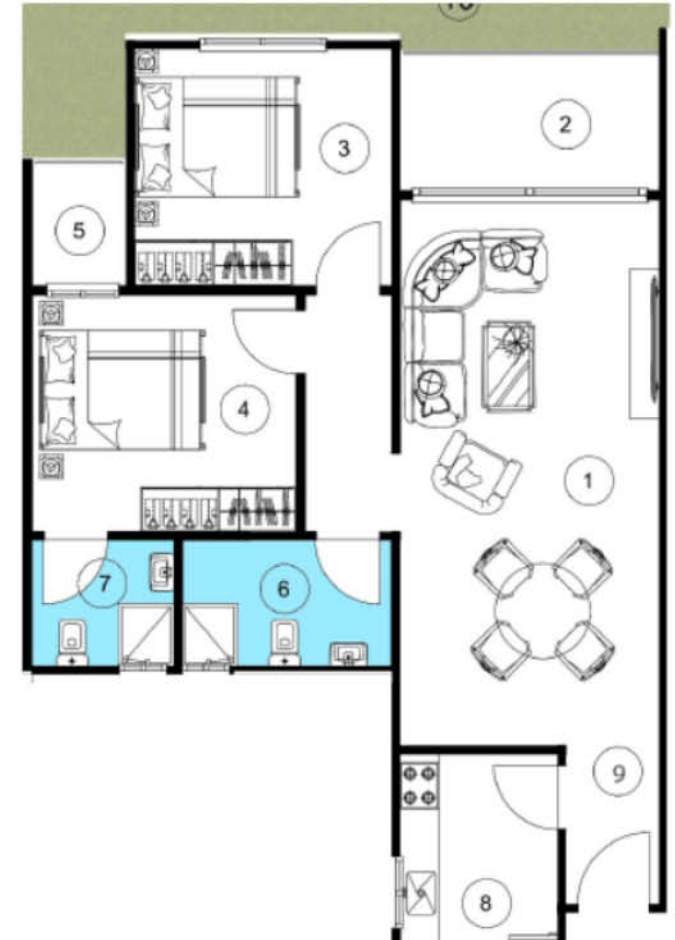
Code : B5-1-G-2

Total Area : 98 m2

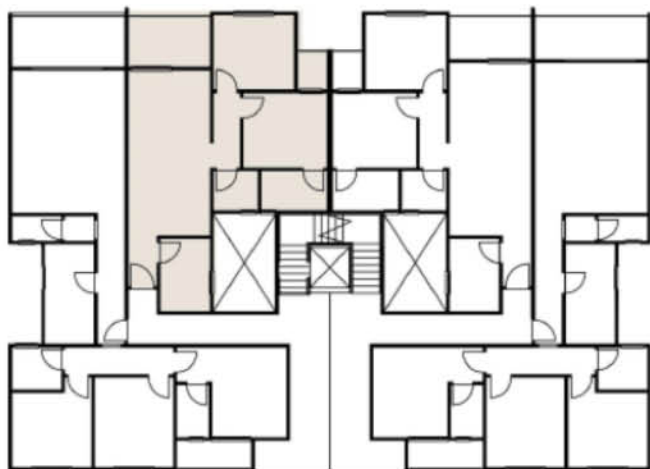
- 1-Reception 6.90*3.30 m
- 2-Terrace (1) 1.85*3.30 m
- 3-Bedroom(1) 3.25*3.00m
- 4-Bedroom (2) 3.35*3.00m
- 5-Terrace 1.20*1.55m
- 6-BathRoom(1) 2.65*1.60 m
- 7-BathRoom(2) 1.80*1.60m
- 8-Kitchin 2.00*2.90 m
- 9-lobby 1.20*2.00 m

Garden

Back : 2.00*8.00 m (16) m2



B5-1-G



Ground Floor

Apartment 3

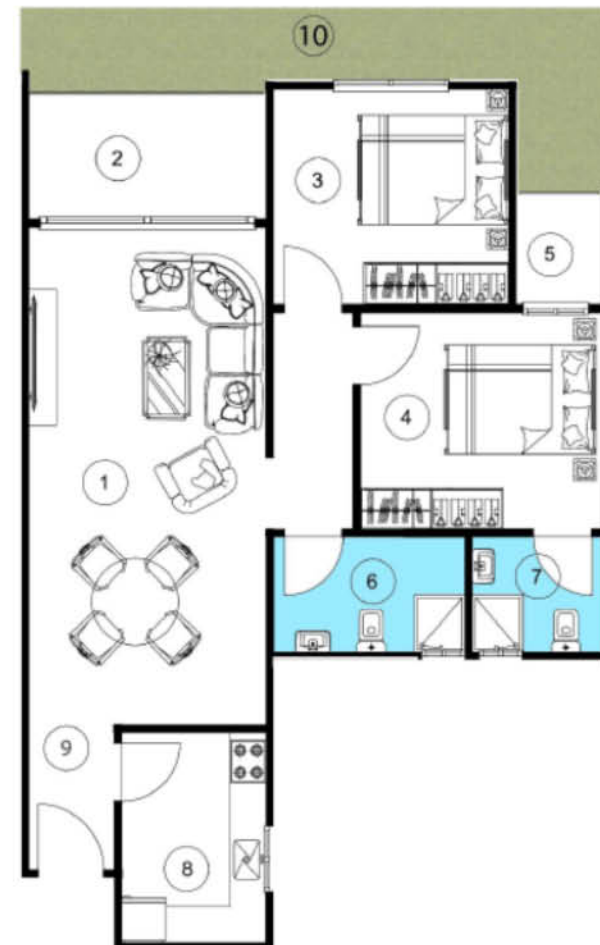
Code : B5-1-G-3

Total Area : 98 m²

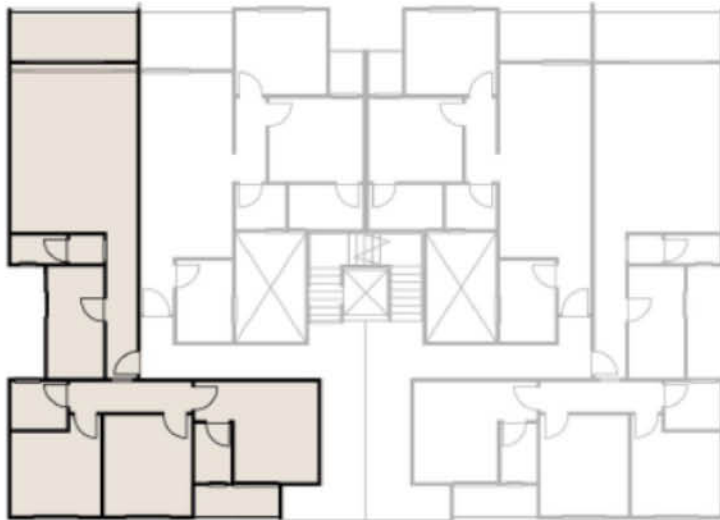
- 1-Reception 6.90*3.30 m
- 2-Terrace (1) 1.85*3.30 m
- 3-Bedroom(1) 3.25*3.00m
- 4-Bedroom (2) 3.35*3.00m
- 5-Terrace 1.20*1.55m
- 6-BathRoom(1) 2.65*1.60 m
- 7-BathRoom(2) 1.80*1.60m
- 8-Kitchin 2.00*2.90 m
- 9-loby 1.20*2.00 m

Garden

Back : 2.00*8.00 m (16) m²



B5-1-G



Ground Floor

Apartment 4

Code : B5-1-G-4

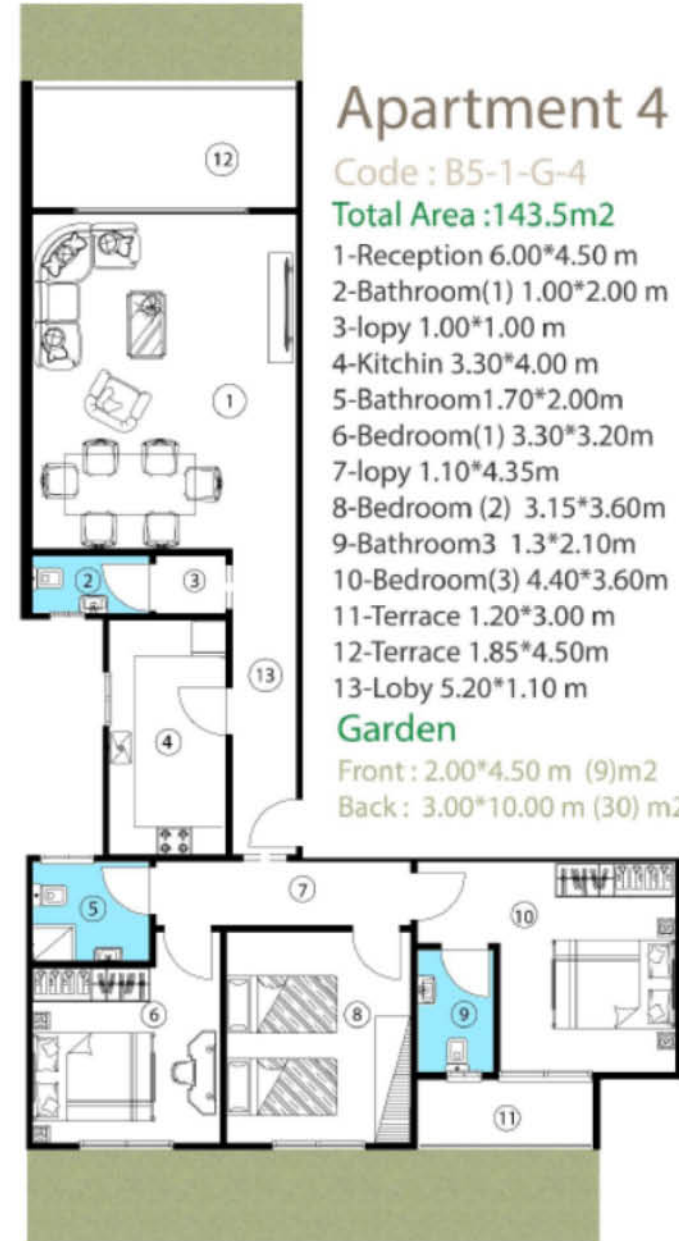
Total Area :143.5m²

- 1-Reception 6.00*4.50 m
- 2-Bathroom(1) 1.00*2.00 m
- 3-lopý 1.00*1.00 m
- 4-Kitchen 3.30*4.00 m
- 5-Bathroom1.70*2.00m
- 6-Bedroom(1) 3.30*3.20m
- 7-lopý 1.10*4.35m
- 8-Bedroom (2) 3.15*3.60m
- 9-Bathroom3 1.3*2.10m
- 10-Bedroom(3) 4.40*3.60m
- 11-Terrace 1.20*3.00 m
- 12-Terrace 1.85*4.50m
- 13-Loby 5.20*1.10 m

Garden

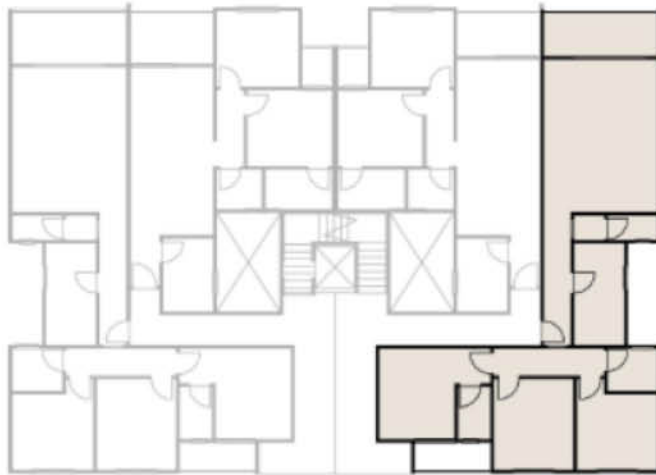
Front : 2.00*4.50 m (9)m²

Back : 3.00*10.00 m (30) m²



Typical Floor

B5-1-T



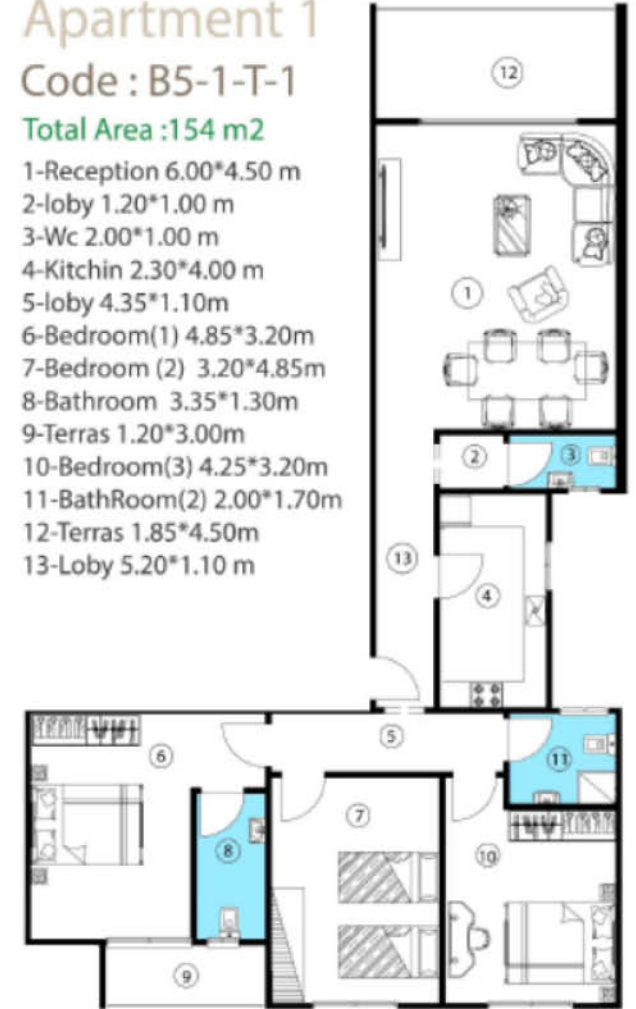
Typical Floor

Apartment 1

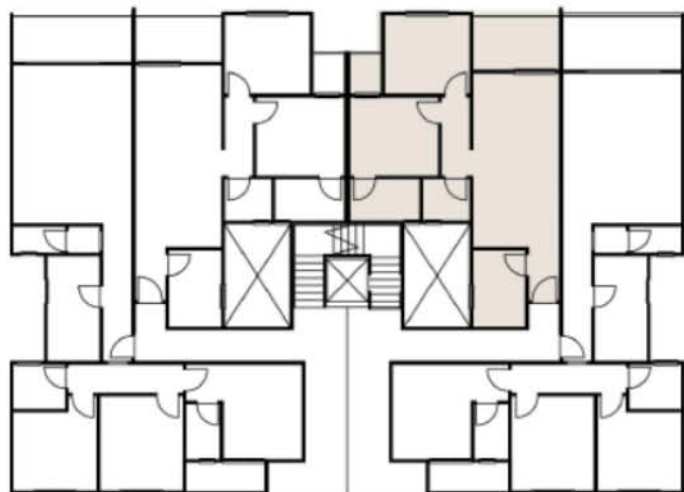
Code : B5-1-T-1

Total Area :154 m²

- 1-Reception 6.00*4.50 m
- 2-lobby 1.20*1.00 m
- 3-Wc 2.00*1.00 m
- 4-Kitchin 2.30*4.00 m
- 5-lobby 4.35*1.10m
- 6-Bedroom(1) 4.85*3.20m
- 7-Bedroom (2) 3.20*4.85m
- 8-Bathroom 3.35*1.30m
- 9-Terras 1.20*3.00m
- 10-Bedroom(3) 4.25*3.20m
- 11-BathRoom(2) 2.00*1.70m
- 12-Terras 1.85*4.50m
- 13-Loby 5.20*1.10 m



B5-1-T



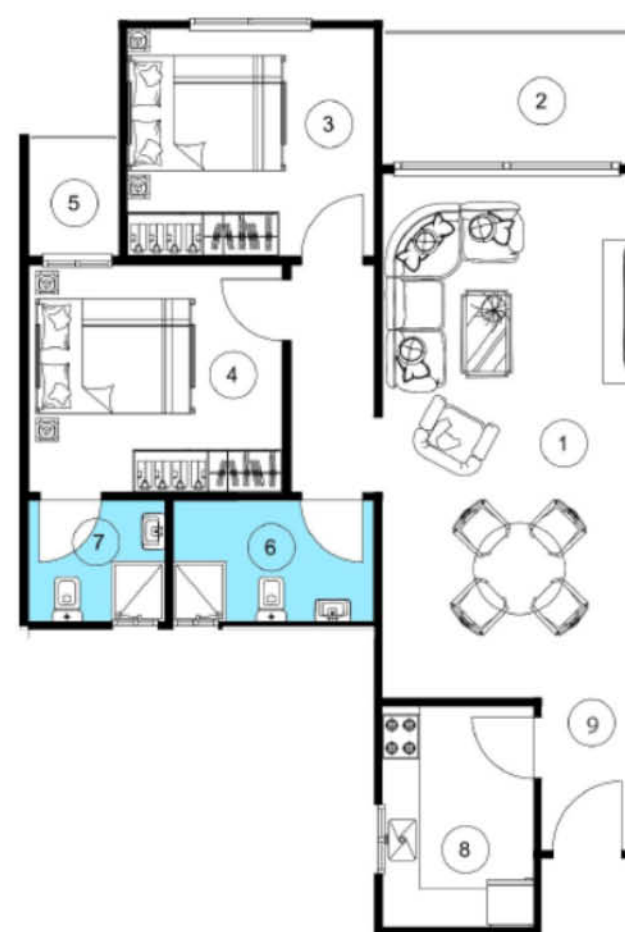
Typical Floor

Apartment 2

Code : B5-1-T-2

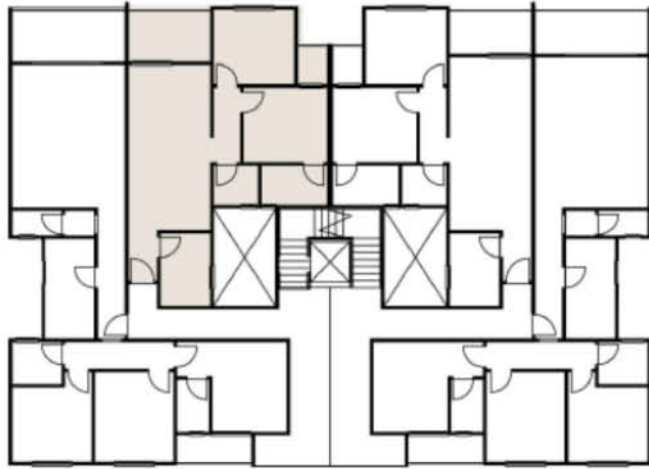
Total Area : 98 m²

- 1-Reception 6.90*3.30 m
- 2-Terrace (1) 1.85*3.30 m
- 3-Bedroom(1) 3.25*3.00m
- 4-Bedroom (2) 3.35*3.00m
- 5-Terrace 1.20*1.55m
- 6-BathRoom(1) 2.65*1.60 m
- 7-BathRoom(2) 1.80*1.60m
- 8-Kitchin 2.00*2.90 m
- 9-loby 1.20*2.00 m



Typical Floor

B5-1-T



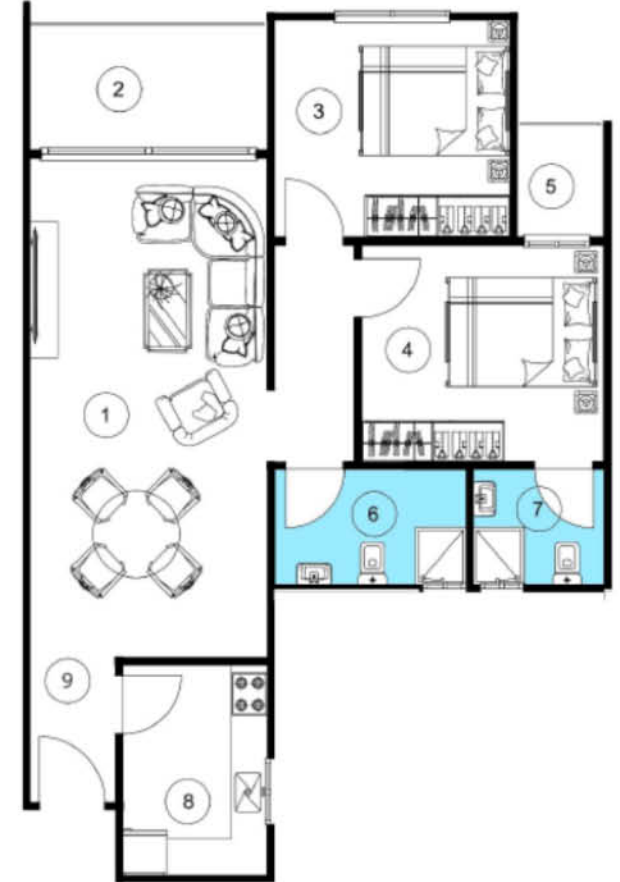
Typical Floor

Apartment 3

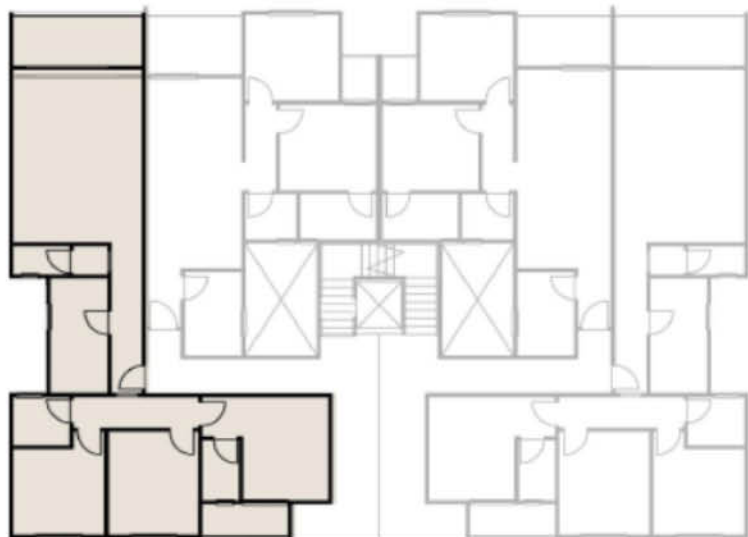
Code : B5-1-T-3

Total Area : 98m²

- 1-Reception 6.90*3.30 m
- 2-Terrace (1) 1.85*3.30 m
- 3-Bedroom(1) 3.25*3.00m
- 4-Bedroom (2) 3.35*3.00m
- 5-Terrace 1.20*1.55m
- 6-BathRoom(1) 2.65*1.60 m
- 7-BathRoom(2) 1.80*1.60m
- 8-Kitchin 2.00*2.90 m
- 9-loby 1.20*2.00 m



B5-1-T



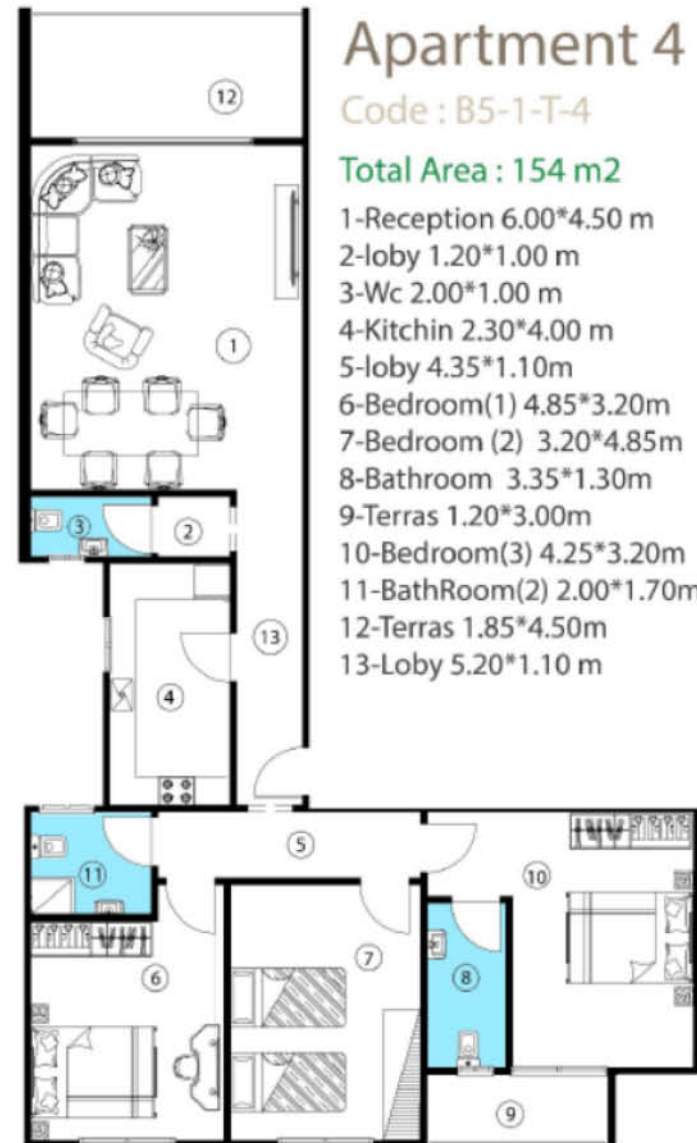
Typical Floor

Apartment 4

Code : B5-1-T-4

Total Area : 154 m²

- 1-Reception 6.00*4.50 m
- 2-lobby 1.20*1.00 m
- 3-Wc 2.00*1.00 m
- 4-Kitchen 2.30*4.00 m
- 5-lobby 4.35*1.10m
- 6-Bedroom(1) 4.85*3.20m
- 7-Bedroom (2) 3.20*4.85m
- 8-Bathroom 3.35*1.30m
- 9-Terras 1.20*3.00m
- 10-Bedroom(3) 4.25*3.20m
- 11-BathRoom(2) 2.00*1.70m
- 12-Terras 1.85*4.50m
- 13-Lobby 5.20*1.10 m



Building B4-B4'

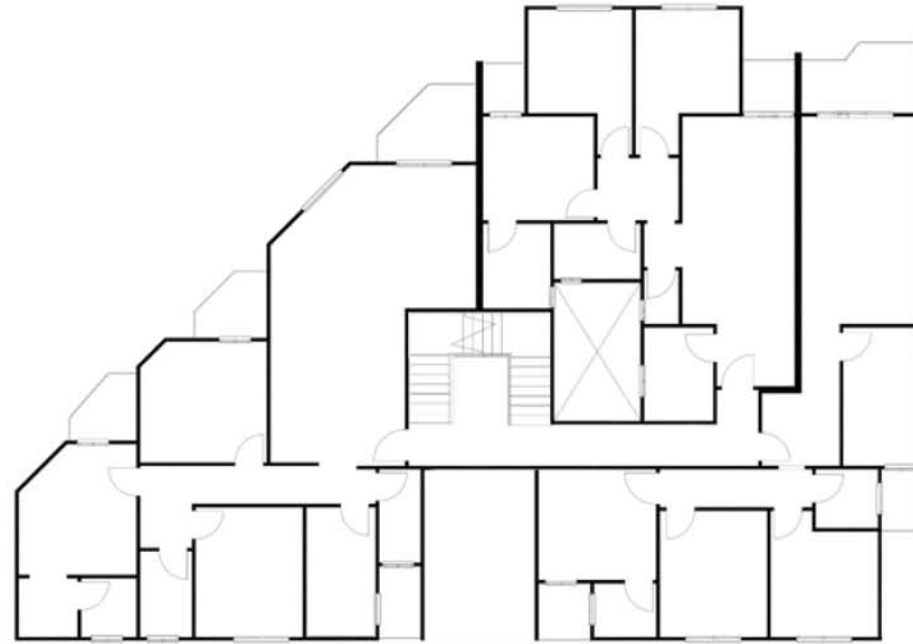
B4-T



TYPICAL Floor

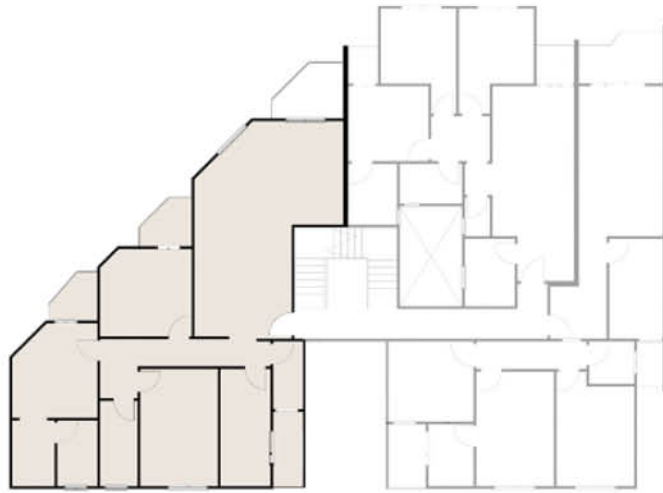
Typical Floor

B4-1-T



TYPICAL Floor

B4-1-T



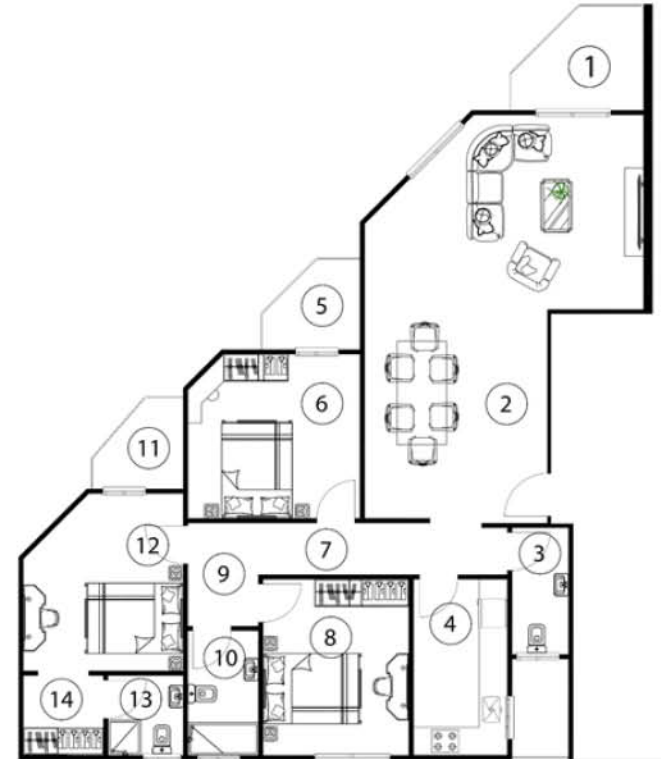
TYPICAL Floor

Apartment 1

code: B4-1-T-1

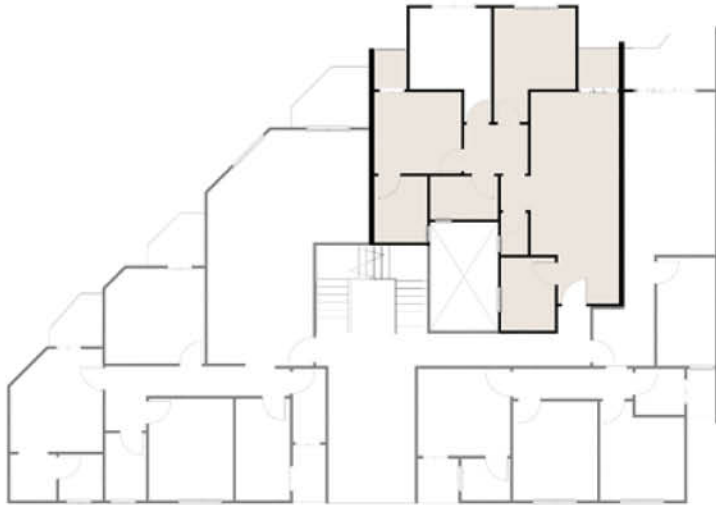
Total Area :188 m²

- 1-Terrace 2.80*2.20 m
- 2-Reception 8.70*6.00 m
- 3-Bathroom 3.00*2.70 m
- 4-Kitchen 4.75*2.00 m
- 5-Terrace 1.90*2.00m
- 6-Bedroom 3.70*3.50 m
- 7-Lobby 5.30*1.10 m
- 8-Bedroom 4.75*3.10 m
- 9-Lobby 2.20*1.50 m
- 10-Bathroom 3.70*1.50 m
- 11-Terrace 1.90*1.90 m
- 12-Master Bedroom 3.80*3.40 m
- 13-bathroom 2.70*1.60 m
- 14-Dressing 2.70*2.70 m



Typical Floor

B4-1-T



TYPICAL Floor

Apartment 2 code: B4-1-T-2

Total Area :116 m²

- 1-Reception 8.00*3.25 m
- 2-Kitchen 2.70*2.00 m
- 3-Bathroom 1.55*1.00 m
- 4-Bedroom1 3.00*3.00 m
- 5-Terrace.1 1.50*1.50 m
- 6-bathroom 2.50*1.60 m
- 7-Corridor 2.40*1.80 m
- 8-Bedroom2 3.00*3.00 m
- 9-Master Bedroom 3.20*3.00 m
- 10-Master Bathroom 2.45*1.95 m
- 11-Terrace 1.50*1.20 m



B4-1-T



TYPICAL Floor

Apartment 3

code: B4-1-T-3

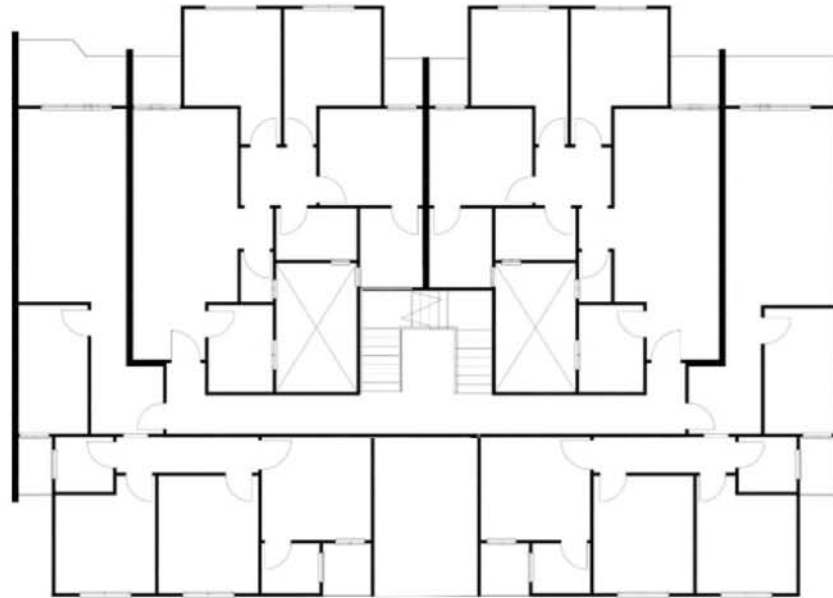
Total Area :132 m²

- 1-Terrace 3.35*2.00 m
- 2-Reception 6.00*3.35 m
- 3-Kitchen 4.00*2.15 m
- 4-Lobby 2.25*2.00 m
- 5-Bathroom 1.80*1.70 m
- 6-Bedroom 14.10*3.00 m
- 7-Corridor 4.40*1.00 m
- 8-Bedroom 4.65*3.10 m
- 9-Master Bedroom 3.40*3.20 m
- 10-Master Bathroom 2.80*1.55 m



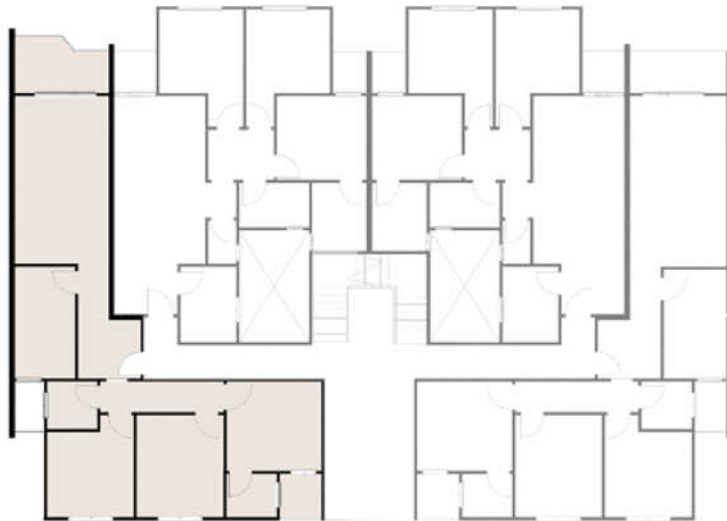
Typical Floor

B4-2-T



TYPICAL Floor

B4-2-T



TYPICAL Floor

Apartment 1 code: B4-2-T-1

Total Area :132 m²

- 1-Terrace 3.35*2.00 m
- 2-Reception 6.00*3.35 m
- 3-Kitchen 4.00*2.15 m
- 4-Lobby 2.25*2.00 m
- 5-Bathroom 1.80*1.70 m
- 6-Bedroom1 4.10*3.00 m
- 7-Corridor 4.40*1.00 m
- 8-Bedroom2 4.65*3.10 m
- 9-Master Bedroom 3.40*3.20 m
- 10-Master Bathroom 2.80*1.55 m



B4-2-T



TYPICAL Floor

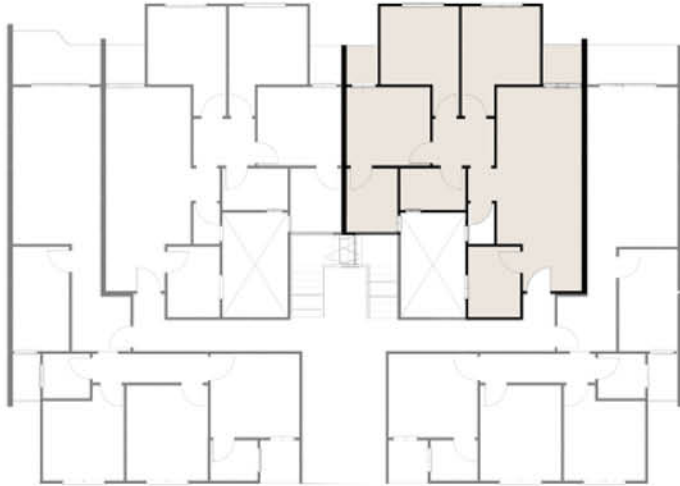
Apartment 2 code: B4-2-T-2

Total Area :116 m2

- 1-Kitchen 2.70*2.00 m
- 2-Lobby 2.25*1.80 m
- 3-Reception 6.00*3.25 m
- 4-Terrace 1.52*1.50 m
- 5-Bathroom 1.55*1.00 m
- 6-Lobby 2.35*1.80 m
- 7-Bedroom1 3.00*3.00 m
- 8-Bathroom 2.50*1.60 m
- 9-Bedroom2 3.00*3.00 m
- 10-Master Bedroom 3.20*3.00 m
- 11-Master Bathroom 2.25*1.95 m
- 12-Terrace 1.50*1.20 m



B4-2-T



Apartment 3

code: B4-2-T-3

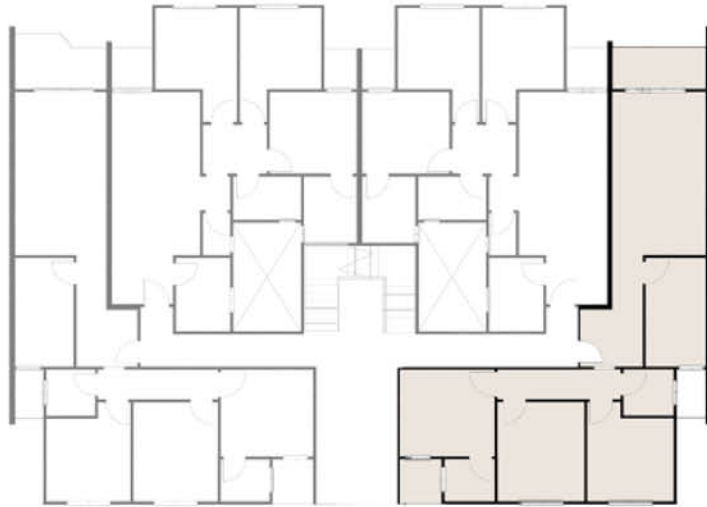
Total Area :116 m2

- 1-Kitchen 2.70*2.00 m
- 2-Lobby 2.25*1.80 m
- 3-Reception 6.00*3.25 m
- 4-Terrace 1.52*1.50 m
- 5-Bathroom 1.55*1.00 m
- 6-Lobby 2.35*1.80 m
- 7-Bedroom1 3.00*3.00 m
- 8-Bathroom 2.50*1.60 m
- 9-Bedroom2 3.00*3.00 m
- 10-Master Bedroom 3.20*3.00 m
- 11-Master Bathroom 2.25*1.95 m



Typical Floor

B4-2-T



TYPICAL Floor

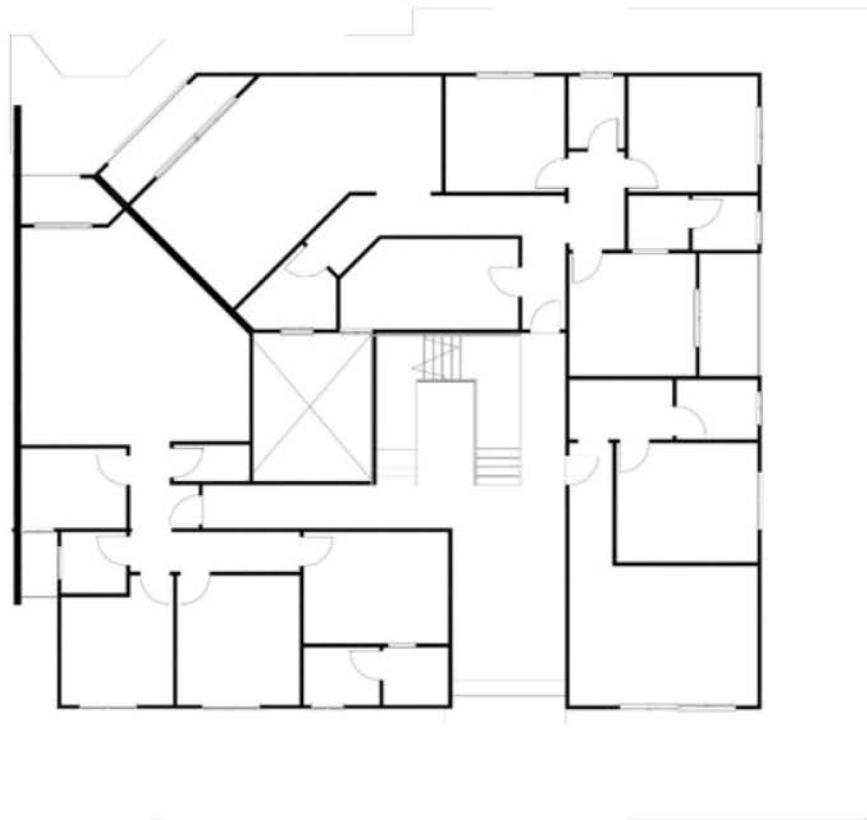
Apartment 4 code: B4-2-T-4

Total Area :132 m²

- 1-Terrace 3.35*2.00 m
- 2-Reception 6.00*3.35 m
- 3-Kitchen 4.00*2.15 m
- 4-Lobby 2.25*2.00 m
- 5-Bathroom 1.80*1.70 m
- 6-Bedroom1 4.10*3.00 m
- 7-Corridor 4.40*1.00 m
- 8-Bedroom2 4.65*3.10 m
- 9-Master Bedroom 3.40*3.20 m
- 10-Master Bathroom 2.80*1.55 m



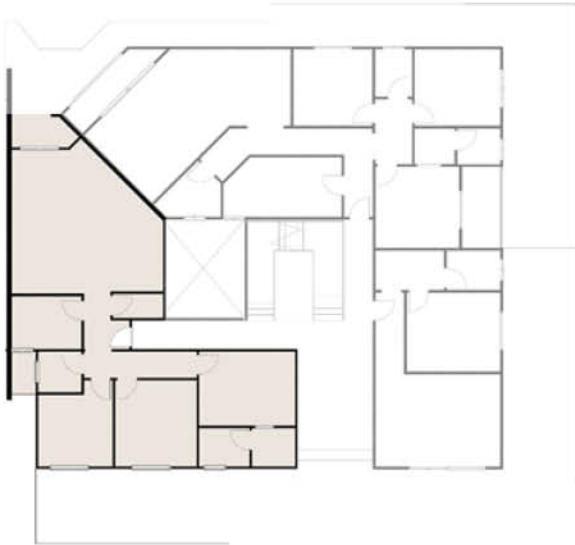
B4-3-T



TYPICAL Floor

Typical Floor

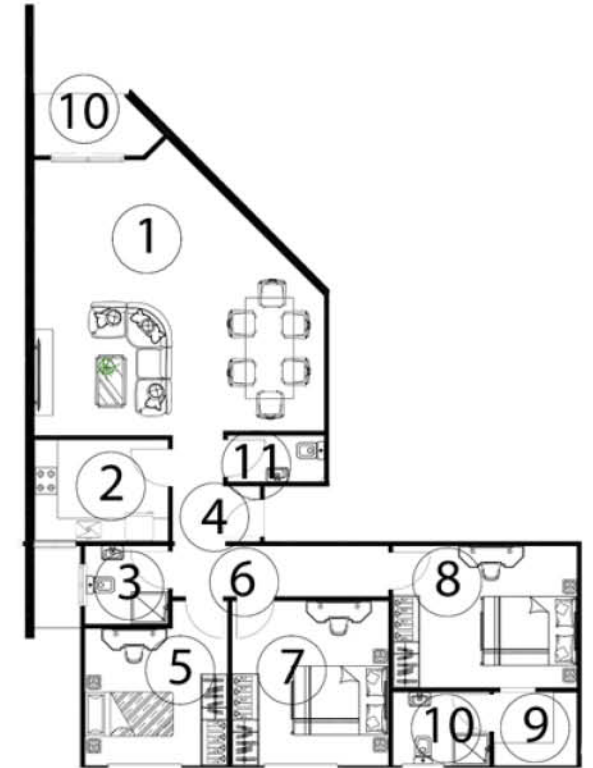
B4-3-T



Apartment 1 code: B4-3-T-1

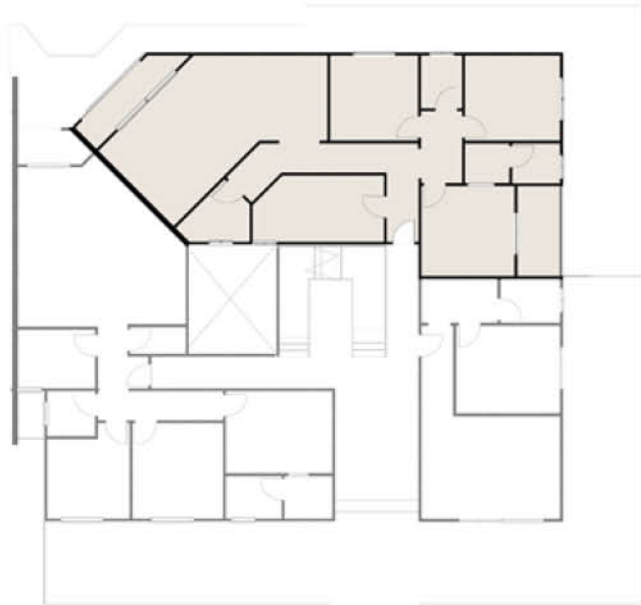
Total Area :160 m2

- 1-Reception 6.30*6.00 m
- 2-Kitchen 2.90*2.20m
- 3-Bathroom 1.80*1.70 m
- 4-Lobby 1.90*1.20 m
- 5-Bedroom1 4.10*3.00 m
- 6-Corridor 4.70*1.10 m
- 7-Bedroom2 4.60*3.40 m
- 8-Master Bedroom 4.00*3.00 m
- 9-Dressing 1.80*2.60 m
- 10- master bathroom 2.10*2.60 m

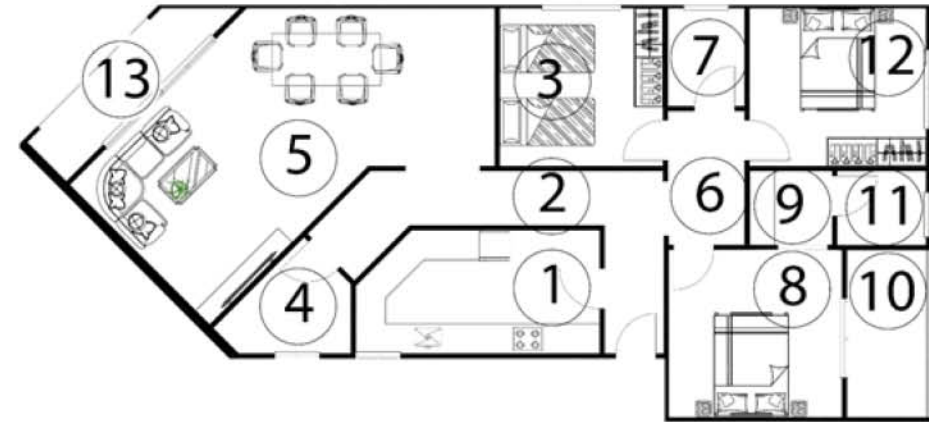


B4-3-T

Apartment 2
code: B4-3-T-2



TYPICAL Floor

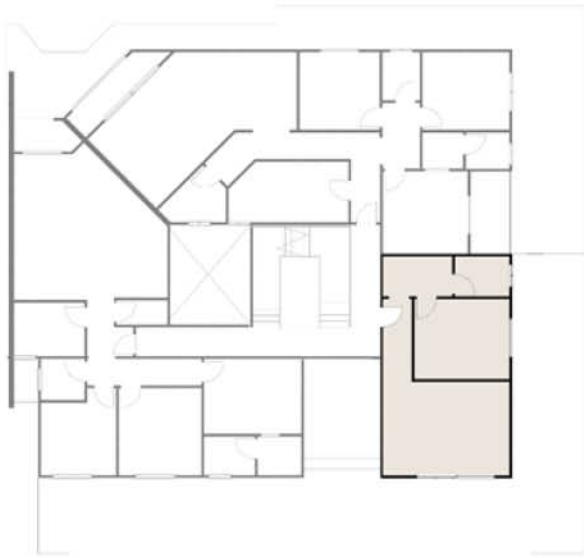


Total Area :168 m²

- 1-Kitchen 4.90*2.50 m
- 2-Corridor 5.90*1.10 m
- 3-Bedroom 3.30*3.20 m
- 4-Bathroom 2.80*2.30 m
- 5-Reception 8.60*4.00 m
- 6-Corridor 2.70*1.55 m
- 7-Bathroom 2.00*1.55 m
- 8-Master Bedroom 3.50*3.40 m
- 9-Dressing 1.70*1.50 m
- 10-Terrace 3.40*1.60 m
- 11-Bathroom 1.80*1.50 m
- 12-Bedroom 3.60*3.20 m
- 13-terrace 4.00*1.25 m

Typical Floor

B4-3-T

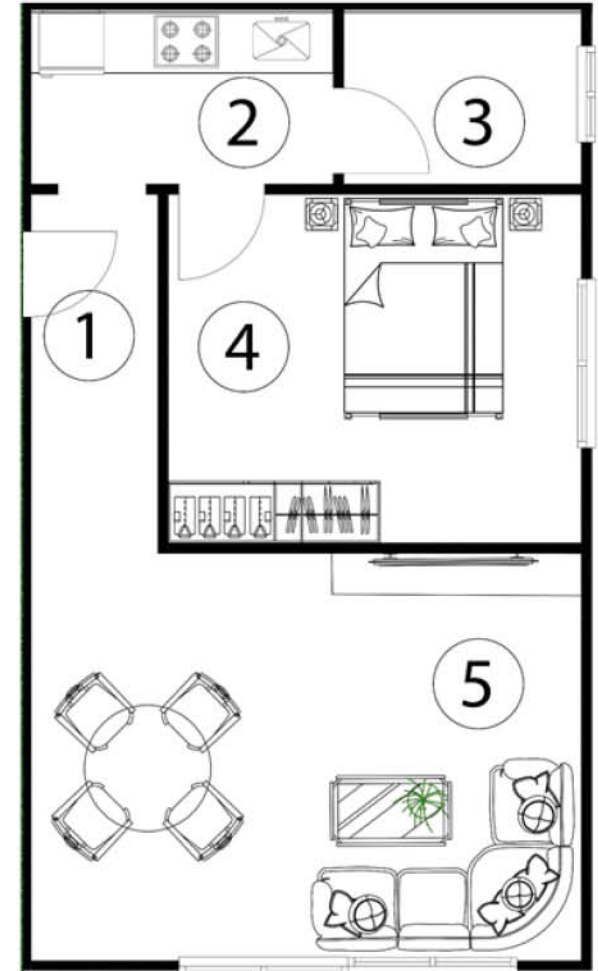


TYPICAL Floor

Apartment 3 code: B4-3-T-3

Total Area :73 m2

- 1-Lobby 3.40*1.20 m
- 2-Kitchen 2.85*1.65 m
- 3-bathroom 2.25*1.65 m
- 4-bedroom 3.90*3.30m
- 5-Reception 5.20*4.80 m





WHITE EAGLE
— DEVELOPMENT —

whiteagledev.com